



HVAC



- System Installation and Replacement
- Preventive Maintenance
- HVAC System Controls
- HVAC System Repair
- Indoor Air Quality Solutions
- Duct Cleaning

Electrical



- Electrical Repairs
- Electrical Installations
- Panel Upgrades
- Home Automation
- Wiring and Rewiring

Waterproofing



- Exterior Waterproofing
- Interior Maintenance
- Basement Waterproofing
- Drainage Improvements
- Crawl Space Waterproofing

Foundation Repair



- Helical Piering, Push Piering
- Foundation Repair and Masonry Work
- Bowing or Buckling Wall Repair

Plumbing



- Septic Pumping
- Waterline Replacement
- Drain Cleaning
- Toilet Repairs
- Leaks and Clogs
- Garbage Disposals
- Faucet Repair

Excavation



- Site Development
- Utility Excavation
- Trench Excavation
- Concrete Services and Management
- Site Redevelopment
- Septic System Installation

Family Owned and Operated Since 2009

At Apex, we understand that plumbing, electrical, HVAC, and foundation problems can be stressful and disruptive. That's why we've assembled a team of experienced and qualified technicians dedicated to exceeding your expectations. We have helped people and businesses across the Bluegrass, and we're ready to help you, too.

Available 24/7
Commercial and Residential

www.apexplumbingky.com
3025 Stanford Rd. Danville, KY



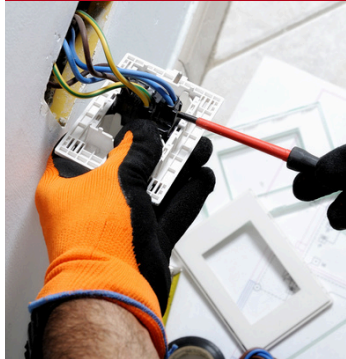
Commercial Services

HVAC



- System Installation and Replacement
- Preventive Maintenance and Service Contract
- HVAC System Controls
- Boilers
- Cooling Towers
- Rooftop RTU

Electrical



- Lighting Upgrades to LED
- Fix Damaged Electrical Components
- New Circuits for New Equipment
- Safety Walkthrough (OSHA and Fire Marshal compliance)

Waterproofing



- Below-Grade Waterproofing
- Membranes for New Constructions
- Curtain Wall Injection
- Exterior Foundation Coatings
- Drainage Improvements

Foundation Repair



- Deep Foundation Underpinning
- Structural Beam and Column Replacement
- Building Monitoring
- Structural Inspections
- Soil stabilization
- Compact Grouting

Plumbing



- Hydrojet
- Grease Trap Pumping
- Grease Trap Installation
- Filter Replacement
- General Repair
- Airline Installation
- ADA-Compliant Installations
- Drainage for Machinery and Specialty Equipment

Excavation



- Site Development
- Utility and Trench Excavation
- Concrete Services and Management
- Site Redevelopment
- Rough Grading of Commercial Pads, Warehouses, and Complexes
- Excavation for Detention and Retention Basins
- Retaining Wall Excavation

Available 24/7
Commercial and Residential

www.apexplumbingky.com
3025 Stanford Rd. Danville, KY